

# Body Measurements - Body Suit & Body Brief - 1A



**Therapist  
Support  
Laboratory**

PO Box 1022  
Collingwood, Victoria, 3066  
Tel: 03 9421 2880  
Fax: 03 9421 1335  
Website: www.tsaustralia.com.au  
Email: tsl@tsaustralia.com.au

Patient Name \_\_\_\_\_

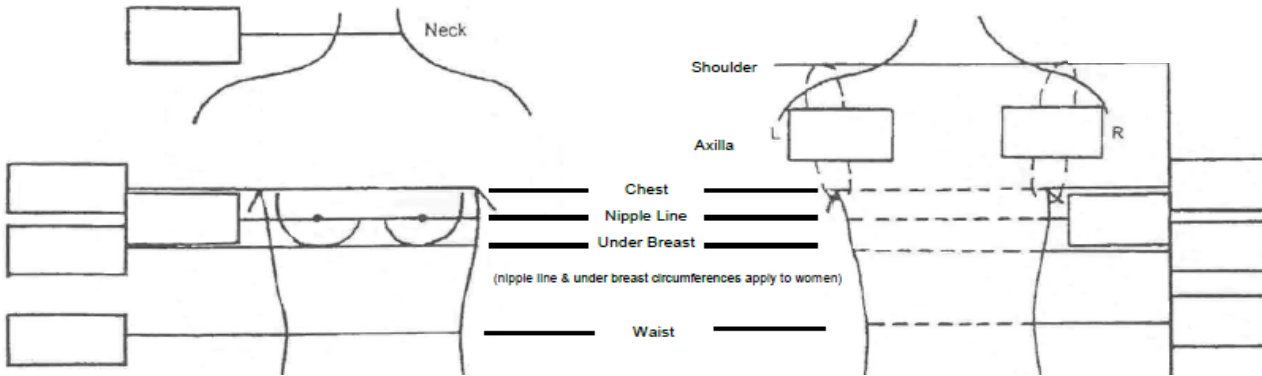
**M** Age \_\_\_\_\_

OT/Physio \_\_\_\_\_

**F**

Date \_\_\_\_\_

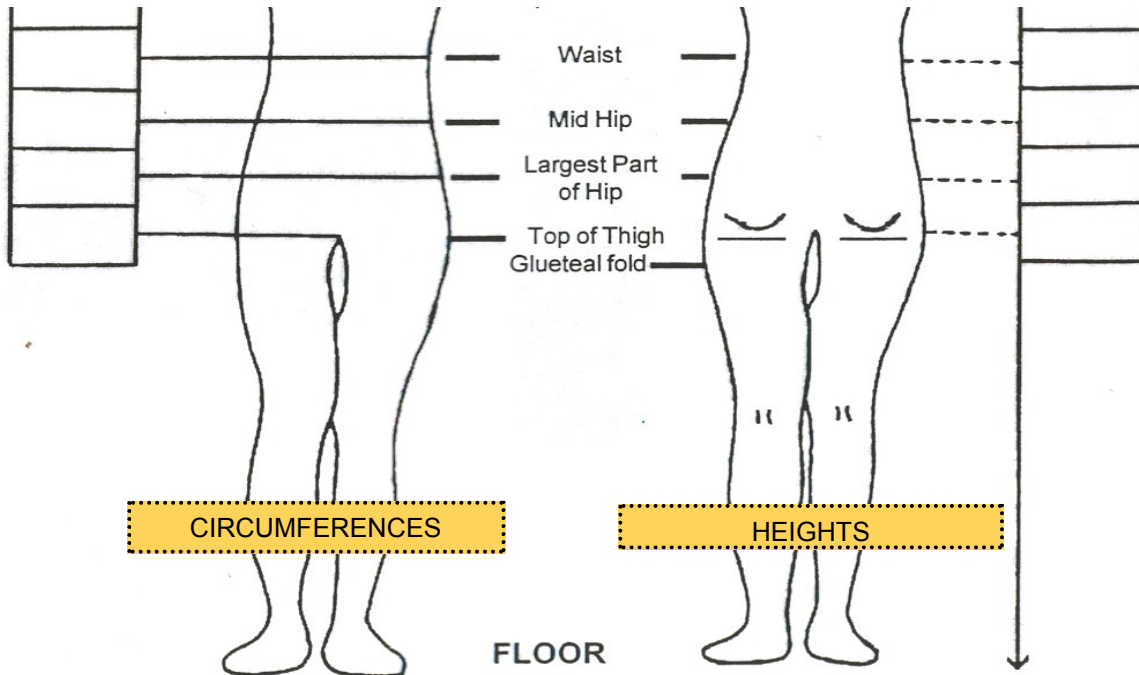
Diagnosis \_\_\_\_\_



All measurements must be taken while patient is in a standing position

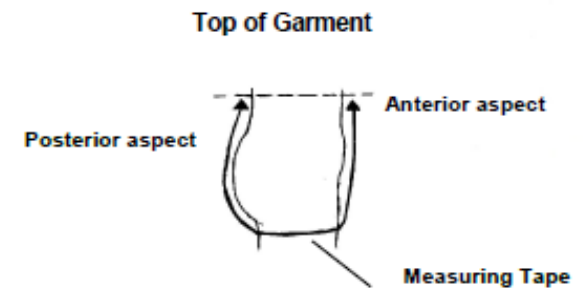
Female patients requiring breast support must wear a well fitted bra when measurements are taken

Place all circumferences and lengths in the boxes. All height measurements must be taken from the highest point of the shoulder down. EXCEPT the gluteal fold height which must be taken from the floor.



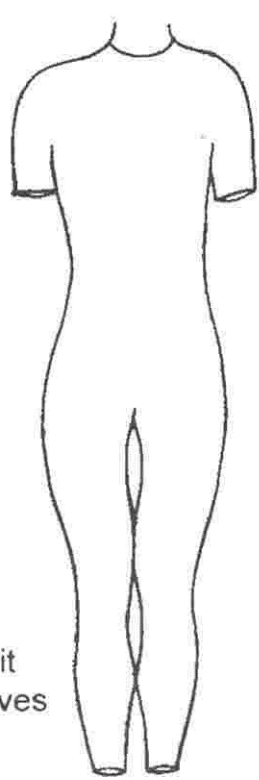
A girth measurement is required to determine waist height — Hold the measuring tape at front of waist and bring it between the legs and stop at centre back.

Girth = \_\_\_\_\_ cm

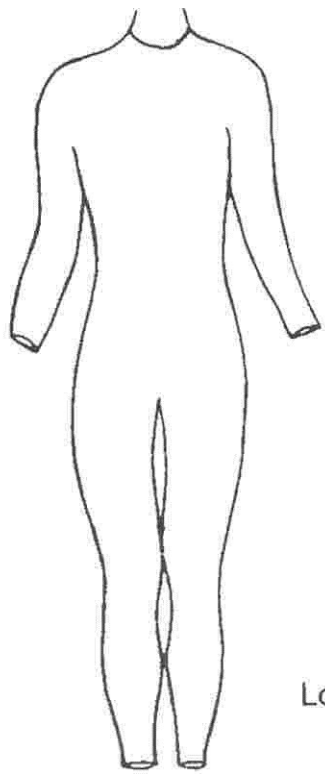




# Body Suit Style Choices



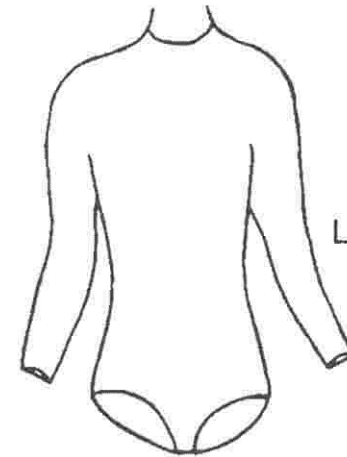
1005  
Body Suit  
Short Sleeves



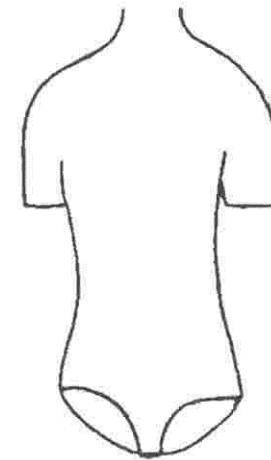
1006  
Body Suit  
Long Sleeves



1007  
Body Suit  
No Sleeves



1002  
Body Brief  
Long Sleeves



1002  
Body Brief  
Short Sleeves